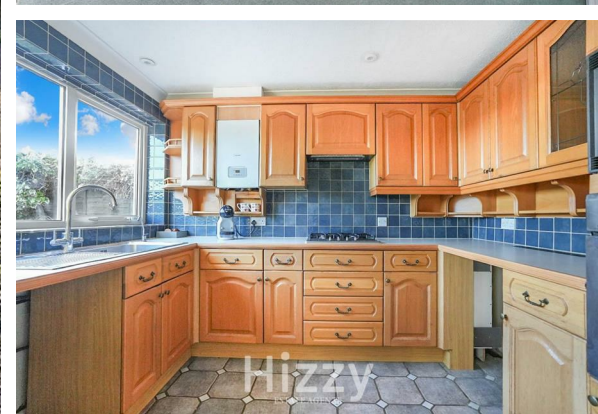


**Hizzy**  
ESTATE AGENTS



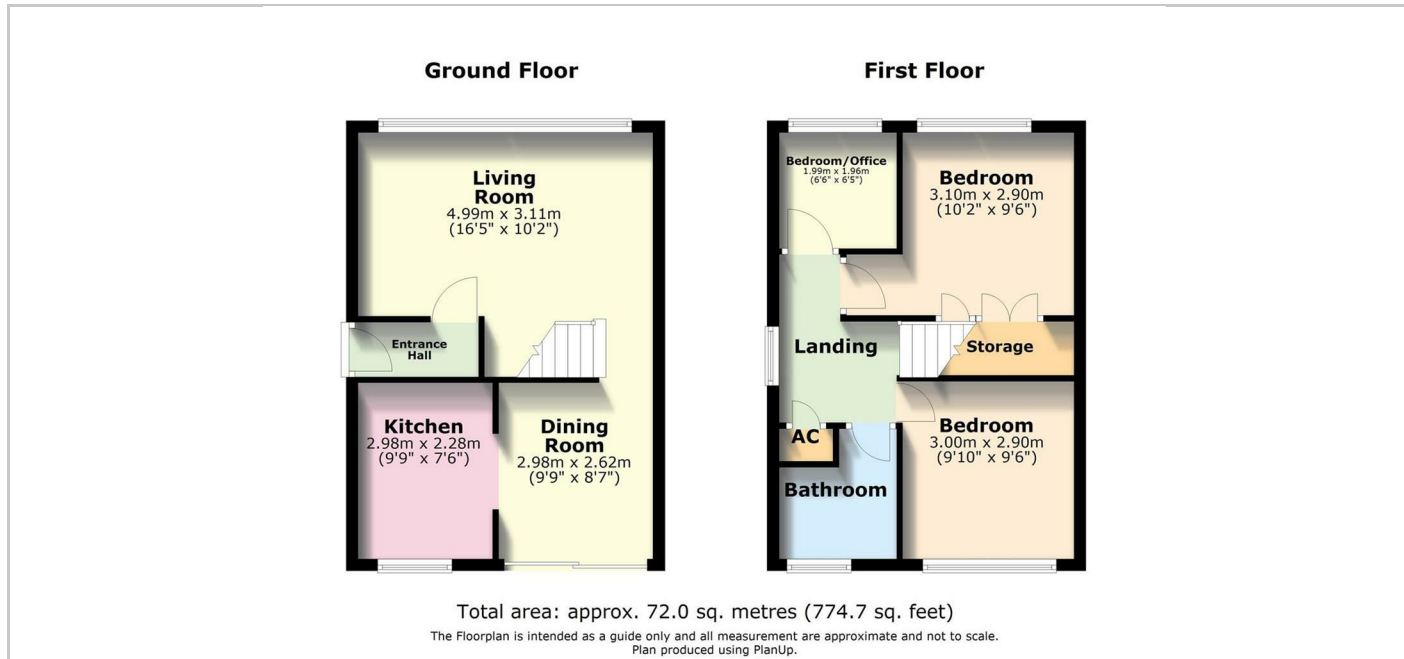
39 Cottesford Close, Hadleigh, Ipswich, IP7 5JA

£1,200

- 3 Bedrooms
- Kitchen
- First Floor Bathroom
- Gas Fired Central Heating
- Garage
- Living Room
- Dining Room
- Off Road Parking
- Double Glazing

## THE PROPERTY

Available Now | 3 Bedrooms | Living Room | Dining Room | Kitchen | First Floor Bathroom | Gas Fired Central Heating | Double Glazing | Terraced Rear Garden | Off Road Parking For 2 Cars | Garage | Unfurnished



## SITUATION

## Directions